

William Glasser International Conference 2014



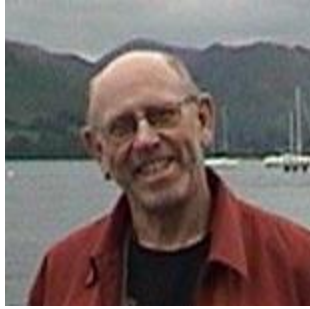
Contents

William Glasser International Newsletter-Summer

President's Report.....	3
Growing Ideas and Walking the Talk - The International Conference in Toronto	5
Choice Therapy podcast radio broadcasting in Japan	6
William Glasser: Champion of Choice	8
Independent Publisher Book Awards.....	9
Congratulations!.....	10
Farida D'Silva Dias granted Senior Status as of July 2014	10
Member Contributions	11
Understanding Your Power: Mind, Brain, and Genome.....	11
Education reformers misunderstand how crucial the relationship is to the process.....	11
Pam Richardson, beloved Kahibah Public principal, retires.....	11
Upcoming Conferences & Events.....	12
2014 Certified & Endorsements.....	13
International Profiles in Choice Theory	15
Toronto Photo Album	16
.....	18
First Green GQS Session	26

President's Report

By John Cooper



If you were one of the 220 people in attendance at the William Glasser International biennial conference hosted in Toronto by William Glasser Institute - Canada I hope your recollections align with mine in many ways. Having just concluded a semester's teaching; spending a week in Vancouver (caught up to Rolf Ahrens) and a few days in Toronto area (in the company of James Montagnes and family), I was fairly certain of what I had to do and how I was going to chair several meetings. Then as I should know by now, along came the people and well

In meeting the candidates for Certification and having a chance to address them it was pleasing to note; energy, nervousness, excitement, confidence, creativity and most obvious – the average age. Faculty who engaged these younger people in their training and certification programs are to be congratulated for bringing so many to this level and at the lead-in to the conference. Could we have engaged them further, instantly? As many readers will know we have a large number who don't continue beyond this stage, do not continue as members and with whom we lose touch. In Choice Theory context are their wants and needs not being clear for them as to “what next?”; “what can I afford?” A few stayed for the conference and right now we have no short term answer to “what next for me now I have completed the Dr William Glaser International, Certificate in Reality Therapy”? Some feedback may assist with addressing this question – improvement is needed. Let us know what you have noted and what has worked.

Members of your board met before the conference. There were policy development workshops, the general board meeting agenda, a session with the Affiliate leaders who could attend and time to plan initial steps for the 2016 William Glasser International Conference in Seoul, South Korea. In addition to board obligations many of the board were engaged as presenters and conference organisers. In expressing appreciation for their work, may I also advise that the only costs for which they were compensated were the meals and accommodation for the three day board meeting. Thanks board members for your energy, knowledge and volunteer time. The interesting work ensures members are keen to attend the monthly teleconferences that finish after midnight for some of us.

Masaki Kakitani, representing the Japanese of Choice Theory presented \$10,000 to the endowment fund with notification that more was to come. He put the challenge out for other affiliates to contribute too. It is now more than a year since Dr Glasser passed away. The endowment fund has been set-up so that future costs associated with WGI can be covered by the interest earned, the capital never to be used.

Approximately 50 were in attendance at the “Take Charge of Your Life” sessions. The work assembled here for the one day course has been designed to recognise the work of Dr. Glasser – a tribute. The feedback received following these sessions has been included in the latest revision which is receiving much acclaim from presenters and those attending. Just last week Mitchell advised that it has been translated into Afrikaans and presented in South Africa. Let's know what is happening in your regions – some photos and words – would be great in this newsletter.

How did you go reading Dr. Jim Roy's book, *Champion of Choice*? Conference attendees were urged to buy the book, read it, review it and put comments online.

People who heard Jim reveal the road to getting information from Dr. Glasser to write this work learned much more than the book tells. Jim's presentation touched people to think, now we have no final arbiter

how do we address difficult questions? When faculty members were asked to provide some questions to address at their session on the final day they had much to offer.

Over 60 faculty members stayed on for the Sunday session. They role played, learned more about role play and then we spent the final session addressing eight of the twelve questions they had put.

We worked in the carousel model Andy Hargreaves from Toronto University first demonstrated to me in 1994. All eight tables of eight were engaged for over an hour gathering ideas and reactions to the questions. This great opportunity revealed that there is so much on which we agree and many ways suggested as to how we can move forward – some quickly, some after consideration. The total summation from the butchers' paper has been typed and will be sent to those in attendance within a week. Now, as many of you have probably experienced – what do you do with the work of eight groups which all had a chance to react to each other group's input? Well I can only say "Work'n on it mate!"

The questions will be published here too. If you were unable to attend the session, you are invited to have your input – what if each affiliate was to send a response through their board delegate or to Kim or me.

Some responses to the questions revealed that communication can be improved. Some led straight to the fact that our website is not all that we want it to be. The board has since undertaken to update / upgrade the website, at the same time improve the data base and some functions. This work is well-underway. As to communication in general, Kim and I will be in touch with affiliates to learn more about what's happening and what's needed – from our many members.

If you enjoy your membership of WGI, it would be very pleasing if you invited colleagues and people who are completing CT training to join.

What's keeping the board busy since the conference?

Marketing, Code of Ethics, Coaching, World Mental Health activities, learning how people may receive taxation compensation for their donation to the Endowment Fund, Completion of Policies; Affiliation, Membership, Conference.

Your board members have become a great team to work with. Several positions will come to an end this year and nominations will be called next month. Find out how we meet and how you can be elected – contact Kim.

If you missed WGI Conference 2014, consider attending Seoul 2016.

Back in the teaching world time whizzed by – I am on holiday; but the deadline for the Newsletter is here, and here I am – in the Galapagos Islands, on the way to a Golden Oldies Rugby Carnival in Argentina. It's 4am and it feels just like this is the time to do WGI business.

Cheers

Coops

Growing Ideas and Walking the Talk - The International Conference in Toronto

by Rolf Ahrens



I am always gratified at the good will that permeates our conferences. The July 9 – 13, 2014 International Conference in Toronto, was no exception. However else we disagree, the good will and caring is always there. Thank you all for that.

The conference is important for WGI. It marked a clear direction with respect to holding the conference and the partnership that it involves.

I think it also set a bench mark for fun, excitement, renewing friendships, learning and, significantly, the passing of messages from the grass roots to those, whose efforts we applaud, that volunteer to run OUR organization.

We welcomed over 200 full-time and a score of one day registrants. In addition we welcomed over twenty guests who shared meals with us. I cannot remember a conference at which the meals we ate together were of such high quality. The banquet was exceptional and the enjoyment and dancing will be legend in the annals of the hotel.

Our program was ambitious and extensive. I think the more than 60 presentations did credit to our theme: *Hope for the future: Getting there from here – Glasser in the 21st Century*. Both WGI and IWGIC received thoughtful, excellent suggestions for the future of both organizations, another reason and benefit of partnering to hold the conference. I look forward with anticipation for a follow up in Korea.

As the man said: location, location, location. Many of you took advantage of the excellent restaurants and welcoming establishments; saw Toronto from the CN tower; wandered the ethnic neighbourhoods; enjoyed the waterfront of Lake Ontario and found artwork tucked away in corners of downtown Toronto.

I think that the conference was reasonably priced for the downtown of a major North American city and it was located in the entertainment district of Toronto. Many attractions were within walking distance and resulted in a savings on local travel expenses.

My hat is off to the hotel staff. Invariably helpful, courteous and friendly they made all things seem manageable. And it is clear that having everything on one level and easily accessible added to the wonderful atmosphere of the conference.

We also benefited from a large number of energetic, enthusiastic and committed volunteers some of whom took on major responsibilities in the running of the conference programs.

While the conference has given us a lot to think about and work on, I look forward to continuing the discussion in Korea in 2016.

Choice Therapy podcast radio broadcasting in Japan

By Tami Utsunomiya

Ehime Prefecture, located in the northwestern part of Shikoku Island, the smallest of the 4 islands in Japan, is known for its mountainous beauty and rich agricultural produce; rice double cropped with winter wheat and barley in the eastern region and a variety of fruits - citrus fruits, persimmons, peaches and grapes, grown throughout the north. Yet in this homely land stands the podcast (internet broadcasting system) station that is broadcasting the world's first Choice Therapy programs on regular basis. Let me tell you how!

Hello to all Choice Theorists around the world. My name is Tami Utsunomiya, freelance TV broadcaster and MC on the podcast radio program, featuring Choice Therapy. I'd like to introduce the activities of Ehime Choice Therapy Study Group, of which I am a proud member and how its members had worked towards bringing the world's first Choice Therapy programs on air.

The world's first Choice Therapy podcast:

<URL> <http://blog.rnb.co.jp/shiawase/>

<Podcast station name> Nankai Broadcasting Radio

<Program name> "Radio therapy – Psychology that leads to happiness"

<Language> Japanese

<On Air> Every 2nd, 4th & 5th Sunday, 13:30-13:40

<Contents> Talk show style hosted by Tami Utsunomiya. Guests with expertise in various fields - counselors, teachers and business owners, are invited to talk about how applying Choice Therapy in the work place or at home has made a difference. Each episode is full of hints on how to make quality choices for ourselves.

<Publication> Though only in Japanese, a booklet has been published with texts of all the interviews broadcasted since the program began in October 2012. Included are interviews with Masaki Kakitani, WGI certified senior instructor and Chairman of WGIJ (William Glasser Institute Japan), and actual role-play scenarios also performed by Masaki Kakitani.

The Ehime Choice Therapy Study Group :

It has been a great pleasure being part of such a happy, dedicated and studious group. The participants would all tell you how leaning to make quality choices has enhanced their quality of life.

<Who we are> Founded in 2000, we were just a tiny group of curious individuals who happened to be interested in learning about Choice Theory. Then soon, experienced firsthand that the absence of criticism was uplifting and making quality choices were effective in problem solving. Starting a podcast program was just one of the many plans executed by the once, shy little Ehime study group. Various sessions have been offered over the years including more than 100 free lecture sessions in schools and local communities, attracting well over 10,000 people in total. Others include role-play sessions by different faculty members, Basic Intensive Training 15 times and 16 Basic Practica.

We now have 4 independent branches within Ehime Prefecture, each lead by an Ehime study group alumni. They are working in close coordination towards building the long awaited Quality School. In Matsuyama city, capital of Ehime Prefecture, in addition to the various seminars open to the public is the weekly Saturday night session offered specifically for local teachers.

<The wind beneath the wings>

In loving memory I recall the day Sumiye Kakitani, WGI certified senior instructor, came to Ehime Prefecture for the first time in 2002, to speak to a small crowd on Choice Therapy. Right after the session was over, I remember Sumiye sensei, as we would call her with great fondness and respect, turned around and spoke ever so softly but passionately “I felt a strong wave of enthusiasm today, so vibrant! Let’s start spreading Choice Theory around us, starting here. I have a feeling this place is going to be somewhat special!” True to her word, Sumiye sensei returned to Ehime for more than 70 times over the next decade to hold numerous sessions, till she passed away in 2011. The number of Ehime Choice Theory Study Group members increased with each visit and is still growing steadily to this day. The local Convention held in March 2013 was especially successful, attracting over 500 participants.

<Special thanks>

I am grateful to all the listeners who tune in every week to listen to our radio program. I also wish to express our gratitude to our sponsors; JACTP (Japan Association for Choice Theory Psychology), Sumiye Memorial Fund and the many individuals, who are financially supporting our activities.



Pursuit for Quality World:

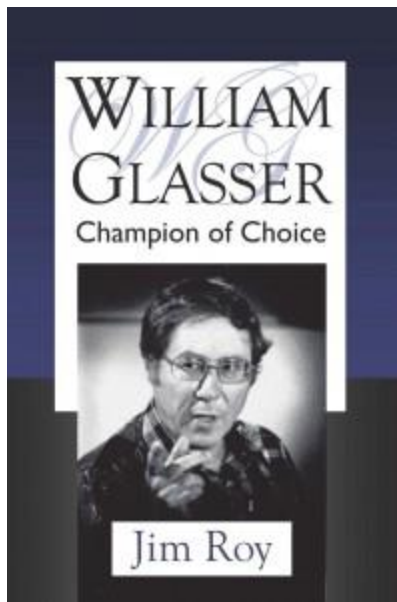
Ehime Choice Theory Study Group stands tall, under the leadership of Masaki Kakitani, pursuing for ways to pay forward the joy, Choice Theory has brought to each member of its society, in making happy choices.

We want to spread the word to all around us and beyond borders – sponsor more lecture meetings and role-play sessions at schools and various communities so that one day soon, it'll simply become a given to know how to make quality choices and for each of us to be happy and be kind to one another.

Wouldn't you want that?!

Translated and edited by Fumiko Hamada,

William Glasser: Champion of Choice



[Click Here To Purchase](#)

[Read Review](#)

Independent Publisher Book Awards



Congratulations!



Farida D'Silva Dias granted Senior Status as of July 2014



South Africans trained by Jean Seville Suffield in Quebec

Basic Instructor Training

Front Row: Susan Burgess, Mirinthia Maasdorp, Judy Hatswell [Instructor], Marjorie Holland, Denzyl Witbooi

Back Row: Mandy Mortlock, Grantham Jansen, Weziwe Mavovana, Mitchell Messina [Instructor], Jean Seville Suffield [Instructor], Thobeka Msi, Anasuya Jegathevi Jegathesan [PSP Endorsement]

Member Contributions

Understanding Your Power: Mind, Brain, and Genome

Contributed by Bob Hoglund



There is enormous interest in power, and especially personal power, which holds the key to every kind of success and achievement. Yet there's a problem with how we approach personal power. Despite the poet William Wordsworth's warning that "we murder to dissect," we analyze power by cutting it up in bits and pieces, trying to tease out the relevant factors from the immensely complex issues open to question. You can examine power as a product of the mind (some people come up with impressive new ideas that have an enormous impact), the product of the brain (some people

seem to be hard-wired for great decision-making), or the product of genes (some people have won the DNA lottery, it seems).

But what if the whole is much bigger than the sum of the parts? This certainly must be true when it comes to personal power, because it's the totality of the person who matters. We call this a "top down" approach, which considers wholeness first, rather than the reductionism of dissecting the whole into the tiniest parts, which is a "bottom up" approach.

For more: <http://youtu.be/YvrnQr5dUX0>

Education reformers misunderstand how crucial the relationship is to the process.

Contributed by Al Katz

<http://www.nytimes.com/2014/08/17/opinion/sunday/teaching-is-not-a-business.html?smid=nytcore-iphone-share&smprod=nytcore-iphone>

Pam Richardson, beloved Kahibah Public principal, retires

Contributed by Kim Olver

A heart-warming article about a retiring school principal in Australia who has employed Dr. Glasser's concepts in her school.

<http://www.theherald.com.au/story/2381566/pam-richardson-beloved-kahibah-public-principal-retires/?cs=12>

Upcoming Conferences & Events

[NE Region Fall Conference - Mindfulness and Choice Theory](#)

Quinebaugh Middle College

742 Upper Maple Street

Danielson, CT October 24-25, 2014

[The William Glasser Institute Australia](#)

2 - 4 October 2015 at

Alexandra Headlands, Sunshine Coast, Queensland, Australia.

[WGII Annual Convention](#)

25th October 2014

2014 Certified & Endorsements

2014 Certified

Mohamed	El Gambra	Morocco
Lamia	Gbaoui Ep Samane	Morocco
Razane	Chroqui	Morocco
Driss	Atlassi Douch	Morocco
Kawtar	Khiredine	Morocco
Faid	El Madani	Morocco
Mohammed	Erramdani	Morocco
Asmaa	Chroqui	Morocco
Mohamed	Mazza	Morocco
Hakima	Soussi	Morocco
Afifa	El Madani	Morocco
Motoko	Onozawa	Japan
Yuki	Takaide	Japan
Keiko	Nakajima	Japan
Kazuyo	Higashijima	Japan
Lim	Chija	Japan
Machi	Kawasaki	Japan
Takako	Ichihara	Japan
Masami	Yamamoto	Japan
Gen	Kuramitsu	Japan
Masanori	Furukawa	Japan
Christine	Carlsson	Sweden
Andree	Eriksson	Sweden
Suzanne	Gavin	Sweden
Elisabeth	Groon Glaspie	Sweden
Taeko	Tanaka	Japan
Sayuri	Anada	Japan
Keiko	Inoue	Japan
Akiko	Jitou	Japan
Hiroshi	Izumi	Japan
Nobuo	Inui	Japan
Makoto	Nakamura	Japan
Takayoshi	Mikami	Japan
Sadayo	Ishida	Japan
Keiko	Shiratori	Japan
Shaima	Al Zafairy	Kuwait
Nadeen	Abbas	Kuwait
Tamadur	H Al Said	Kuwait
Dr. Hasan	Al Humaidi	Kuwait
Amna	Al Rumh	Kuwait
Dr. Ibithal	Al Awadi	Kuwait
Cristin Shui Har	Oh	Singapore

Li Shan	Goh	Singapore
Piyali	Chakrabarti	Singapore
Yueling	Tan	Singapore
Ting Tin	Tan	Singapore
Li Hei Moses	Chew	Singapore

2014 Practicum Supervisor Training

Mohamed	El Gamba	Morocco
Razane	Chroqui	Morocco
Driss	Atlassi Douch	Morocco
Kawtar	Khiredine	Morocco
Mohammed	Erramdani	Morocco
Asmaa	Chroqui	Morocco
Mohamed	Mazza	Morocco
Nicholas Gabriel	Lim	Singapore
Wen Sze Doreen	Loh	Singapore
Mandy Mee Ling	Lee	Singapore
See Yim	Low	Singapore
Jim	Lim	Singapore
Gail Victoria	Green	Singapore

2014 Practicum Supervisor Endorsed

Phey Ling	Kit	Singapore
Ilyana	Akbar	Singapore
Linda	Chia	Singapore
Bathmavathi d/o	Narayanan	Singapore

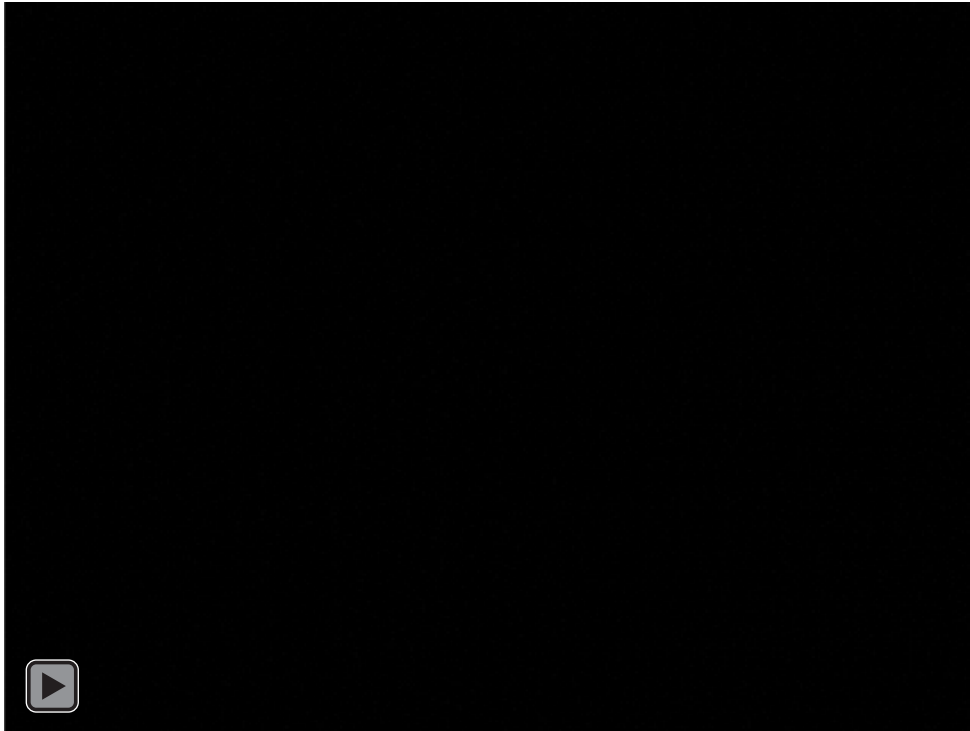
2014 Senior Faculty

Mary	Farrel-Jones	Australia
Jae	Hwang Park	Korea
Young	Mee Chang	Korea

2014 Basic Instructor

Hiroe	Hagio	Japan
-------	-------	-------

International Profiles in Choice Theory



If you have problems viewing this video within the PDF, it can be viewed online at:
<http://vimeo.com/101246665>

Toronto Photo Album

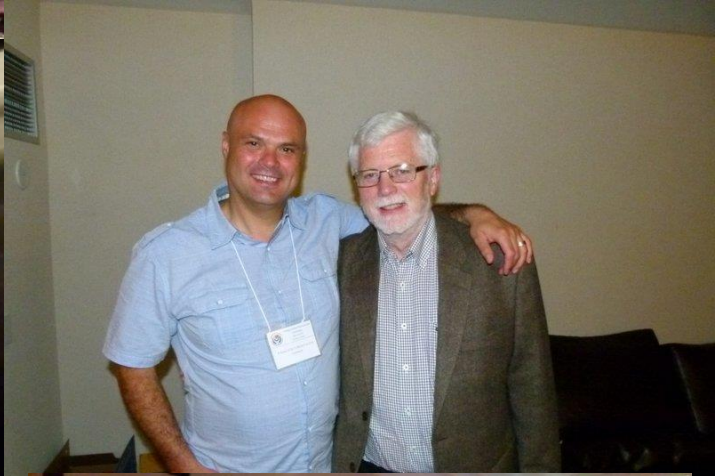


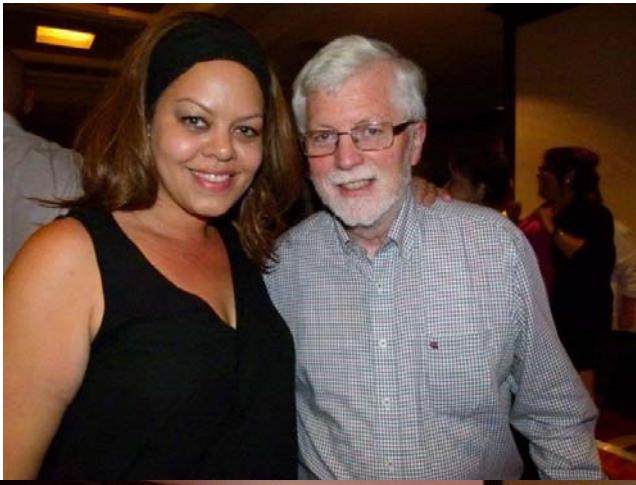


















First Green GQS Session

By Juan Pablo Aljure

Dear friends and colleagues. In the following link you will find a video clip one of our 12th grade students did about our yearly environmental day of service we do since 2012 around the Green Apple Day of Service of the World Green Building Council. Feel free to share it. This is what RS has become over the years, a great big family of learning and service...http://youtu.be/CKoIb0D5N_g



55 years

Learning for sustainability, wellness, and success!



Glasser Quality School



Excellent School



Green School





Learning for sustainability, wellness, and success!



LEED Certification Review Report

This report contains the results of the technical review of an application for LEED® certification submitted for the specified project. LEED certification is an official recognition that a project complies with the requirements prescribed within the LEED rating systems as created and maintained by the U.S. Green Building Council® (USGBC®). The LEED certification program is administered by the Green Building Certification Institute (GBCI®).

Rochester School New Site Project

Project ID	1000020604
Rating system & version	LEED FOR SCHOOLS v2009
Project registration date	12/05/2011



Certified (Gold)

CERTIFIED: 40-49, SILVER: 50-59, GOLD: 60-79, PLATINUM: 80+

LEED FOR SCHOOLS (V2009)

ATTEMPTED: 65, DENIED: 7, PENDING: 0, AWARDED: 64 OF 110 POINTS



First LEED Gold School in Latin America



We are a healthy, sustainable, and high performance school



We have designed a campus with low consumption of natural resources that gives well-being to all our community

We are the only green Glasser Quality School in the world



Learning for sustainability, wellness, and success!

MAY/2011 - OCT/2012



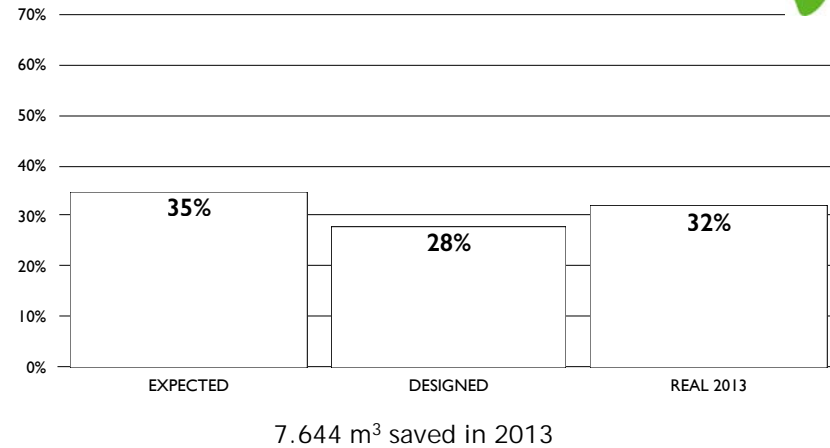
11 YEARS OF DESIGN
1.5 YEARS OF ENGINEERING

SUSTAINABLE USE OF WATER



- Waste water treatment plant
- Recycled water for toilets and irrigation
- Low consuming fixtures

POTABLE WATER SAVINGS



40 Collectors for showers



SOLAR ENERGY

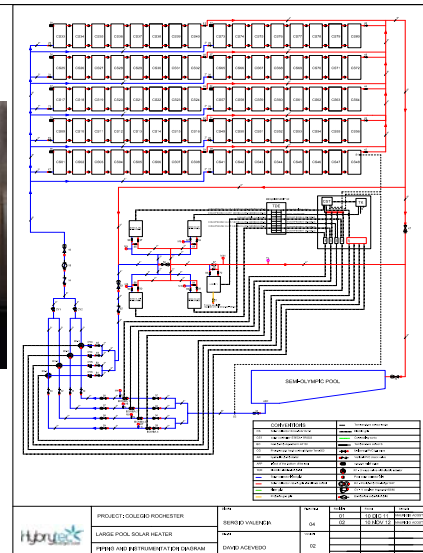
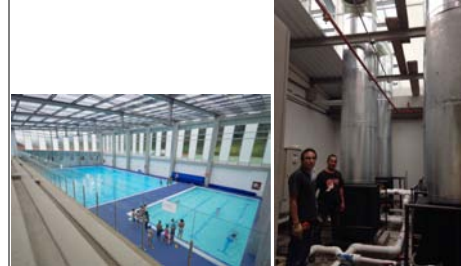
84 Photovoltaic panels
20 KW_p

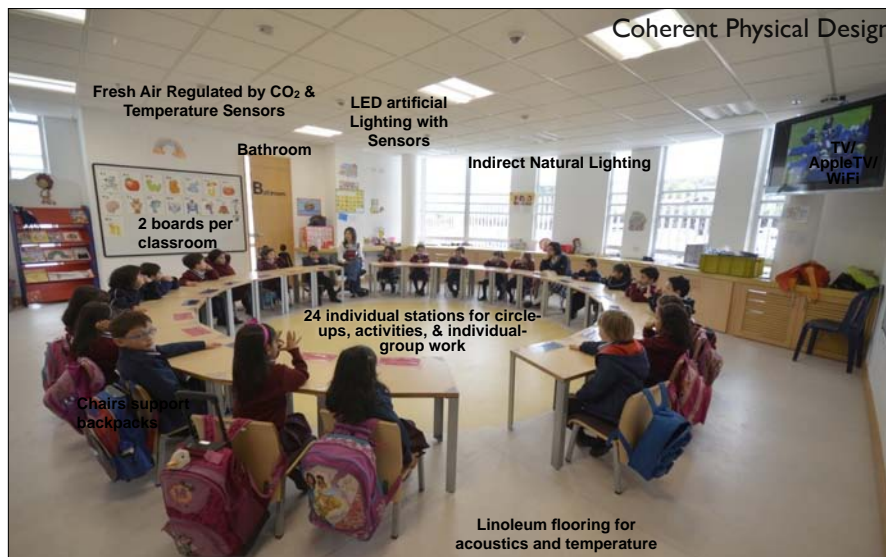
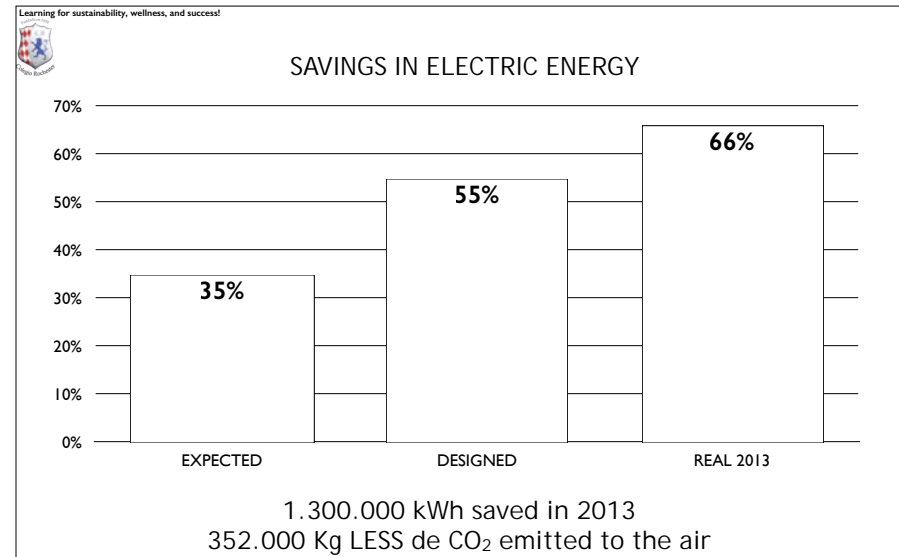


94 Collectors for 2 swimming pools



INTELLIGENT SOLAR CIRCUITS







RESIDUES MANAGEMENT 2013

3,126 kilograms recycled paper:

- = 51 trees of 10 metros
- = 80,000 liters of water
- = 4,300 liters of gasoline
- = 2,900 tons of CO₂



470 Kg Plastic: 700 Kg CO₂
 30 Kg Tetrapak
 30 Kg Aluminum: 260 Kg CO₂
 200 Kg Scrap
 140 Kg Glass: 40 Kg CO₂
 800 Kg Compost



CAMPUS AS A LIVING TEXTBOOK



Campus as a Living Textbook



- ☀️ Waste water treatment plant
- ☀️ Solar Aquatic Center
- ☀️ Photovoltaic Energy
- ☀️ Smart Lighting
- 🌱 Ventilation for Learning
- 🌱 Healthy Parks & Landscaping
- 🌱 Environmental Curriculum
- 🌱 Conservation Projects



Supporting
 Encouraging
 Negotiating
 Trusting
 Accepting
 Listening



Mental Health - Wellness



We learn to create and maintain our mental health.



SERVICE FOR SUSTAINABILITY

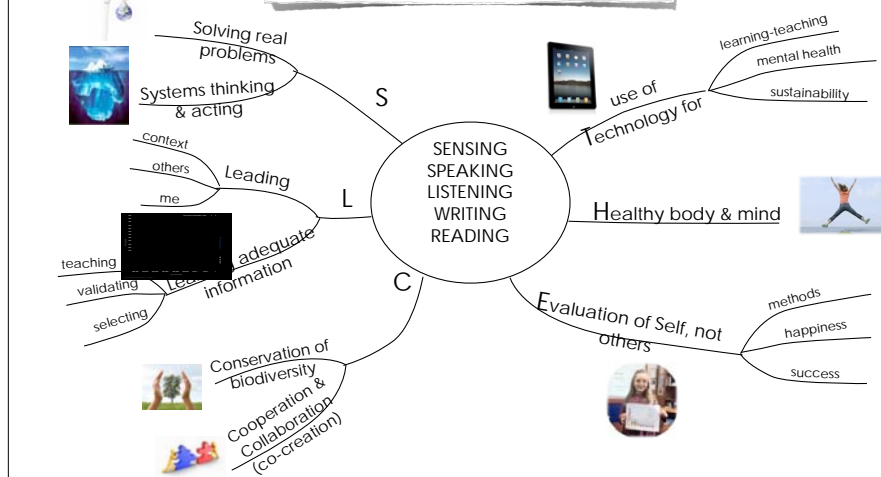
Green Apple Day of Service - 2012



Green Apple Day of Service - 2013



Useful Competencies for life THE-CLS



Need-Satisfying Classes

We work better with
people with whom we
feel safe,
with people who care
for us,
with people that helps us
be successful,
with people who gives us
options and alternatives,
and with people we have
fun.

Dr. William Glasser
(2003)





Visual Vocabulary Development

4. Written word

Apple

See word
Say "Apple"

3. Symbol of apple



See symbol
Say "Apple"

2. Picture of apple



See picture
Say "Apple"

1. Real object



Touch, smell, see,
manipulate Say
"Apple"

Integrated
Visual Learning
&
Choice Theory
psychology

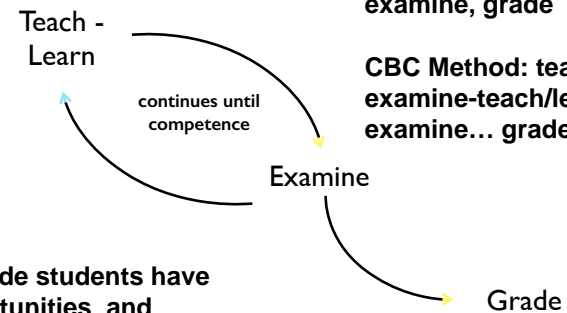
NO TRANSLATION



Competence Based Classes - CBC

Traditional method: teach,
examine, grade

CBC Method: teach/learn-
examine-teach/learn-
examine... grade



5th - 12th grade students have
limited opportunities and
every opportunity counts



Relationships are Our Focus



🏆 Constructive habits
🏆 Virtues

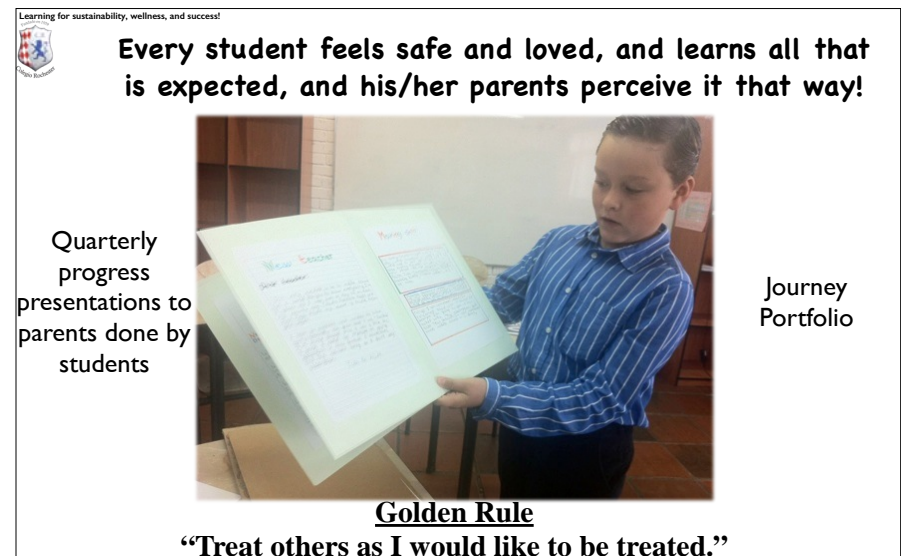
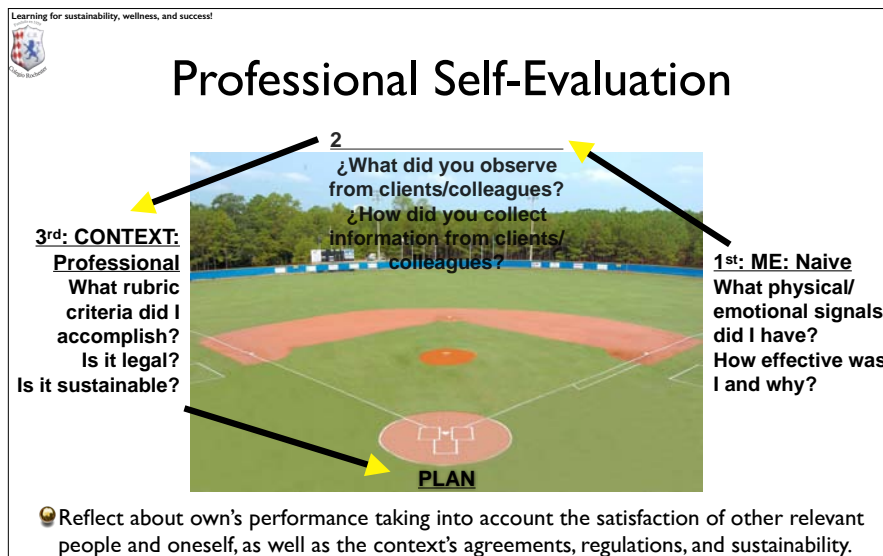
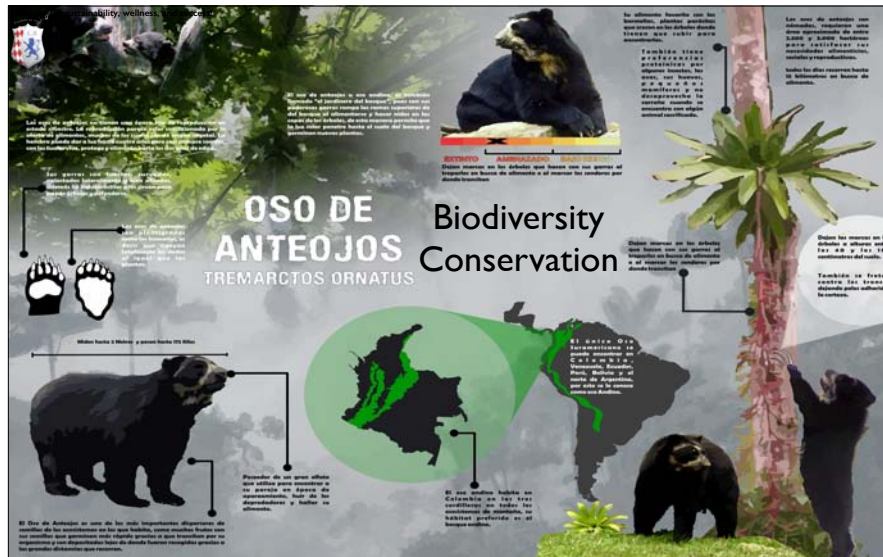
🏆 Artistic expression
and teamwork



Systems thinking & acting:

Understanding the complexities of the interdependencies within a system







PARTNERSHIPS



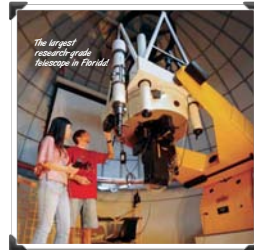
Santa Bárbara Pre-School:

- Direct admission
- Based on CT psychology



Saint Patrick Catholic School:

- Study at Norfolk, Virginia for 2 months
- Host families
- Catholic GQS



Florida Institute of Technology:

- Science-Tech-Admin-Psych
- Direct admission
- Scholarship up to US\$20,000

COLOMBIAN UNIVERSITIES ALSO



How is a GQS related to environmental conservation?



How is a GQS related to environmental conservation?



Thank you for coming... Thank you Dr. Glasser